

Bravo! An Alternative For Machine

Vent Free Design. No breather or vents to leak! Factory lubricated for life with synthetic, semi-fluid gear lubricant with an operating range of -20°C to 110°C.

oil free **



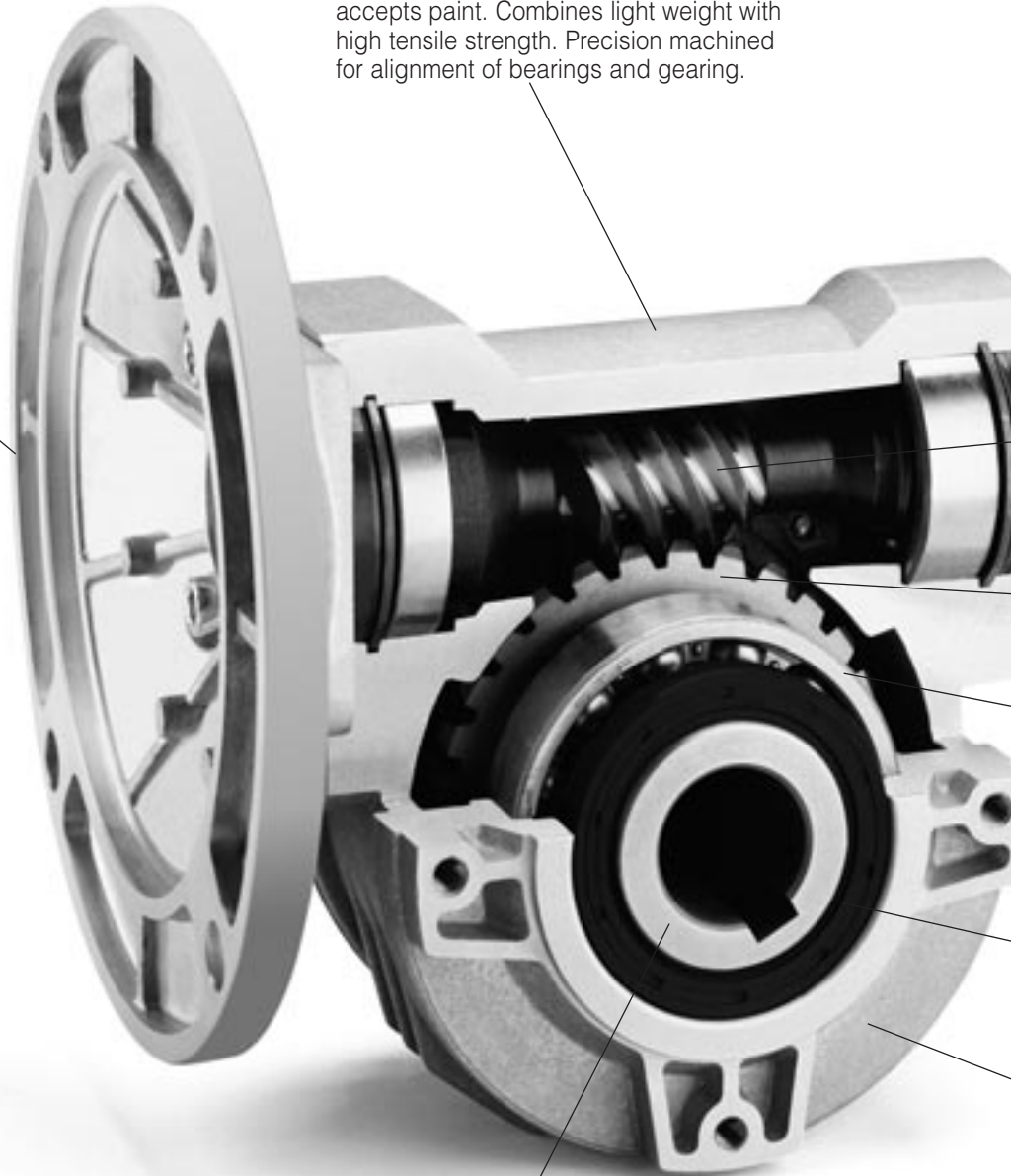
vent free **

NEMA C flange with quill input accepts 56C, 143-5TC and 182-4TC motors.



Bravo™ up to two-thirds lighter and one-third smaller!

Single-piece aluminum alloy housing is vacuum impregnated with Resinol RT (MIL-STD 276) for protection and sealing. No secondary finish required but readily accepts paint. Combines light weight with high tensile strength. Precision machined for alignment of bearings and gearing.



Hollow output shaft mounting is standard at no extra cost. Reduces total drive envelope size, weight and cost. Solid shaft single and double output is available.



Designers



Oversized bearings support positively-retained, high speed shaft for higher shock load capacity — ideal for frequent starting and reversing applications. Premium, Nitrile® high temperature seals each end.

Single-piece alloy steel input shaft and worm shaft. High helix angle worm is case-hardened (Rc 58-60), ground, teeth are profiled and radiused, for noise reduction and enhanced efficiency.

Bronze alloy worm gear is centrifugally cast onto an iron hub for maximum strength, lubricity and superior life.

Oversized bearings for radial load capability and maximum hollow output shaft diameters.

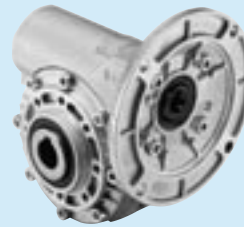
Premium, high-temperature Nitrile® output seals.

Impregnated and machined bearing caps with exterior machined surfaces mate to a variety of mounting accessories. Extra-deep thread engagement provided for greater support strength. Zinc plated hardware.

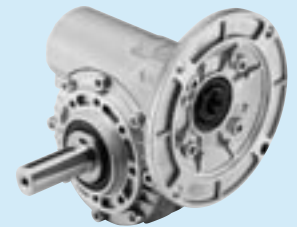
** Size 534 is filled with Mobil SHC 634 synthetic oil and is furnished with a vent.

START WITH ONE OF FOUR BASIC UNITS...

Motorized HMQ



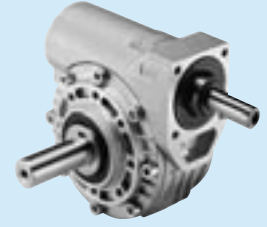
Motorized BMQ



Non-Motorized H



Non-Motorized B

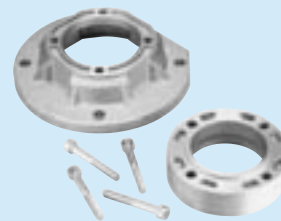


AND ADD MOUNTING ACCESSORIES...

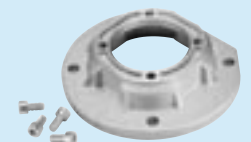
Reaction Arm R



Horizontal T Base



FL Flange (Long)



F Flange (Short)

TO CREATE DOZENS OF GEAR AND GEARMOTOR COMBINATIONS

