



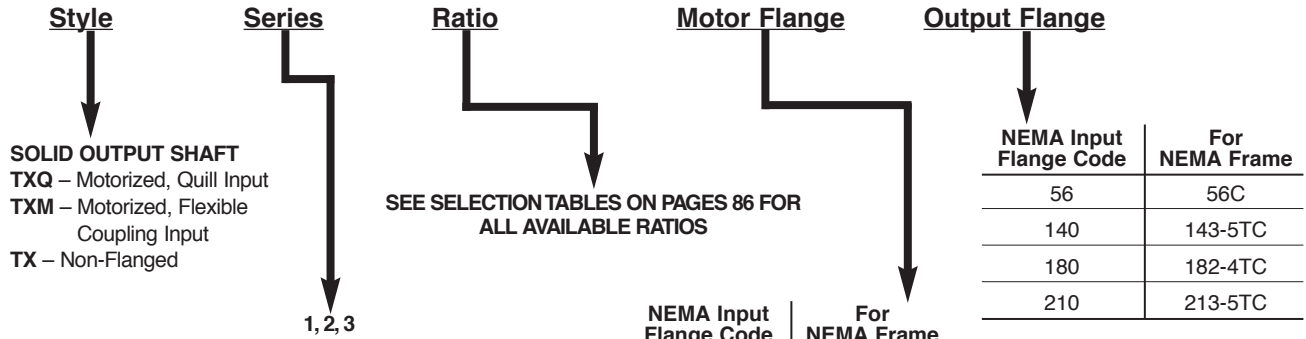
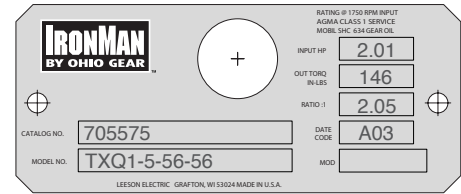
# STOCK RATIO MULTIPLIER MODEL NUMBER SYSTEM

## LEESON 800 Series Gear Reducer Model Number Nomenclature

All stock and custom 800 series reducers are identified by a model number. The model number appears on the nameplate and describes pertinent features of the reducer. An example follows, along with a listing of the various letters and positions used.

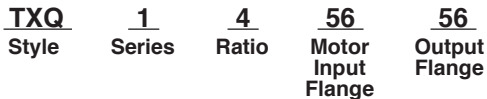
NOTE: All ratio multipliers also have a catalog number—for example 707012L. Reducers and renewal parts should be ordered by catalog number. Accessories that are field installed will not be noted on the nameplate.

### TYPICAL NAMEPLATE



## Sample Model Number

Motorized Quill Input Series 1; 4:1 Ratio, 5/8" Input Bore with NEMA 56C Flange, and 56C output flange.

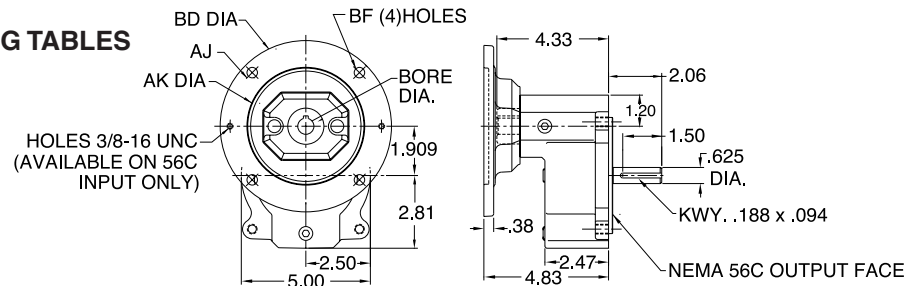


NEMA Input Flange Code	For NEMA Frame
48	48CZ
56	56C
140	143-5TC
180	182-4TC
210	213-5TC
250	254-6TC
N	Non-motorized input

## RATIO MULTIPLIER

### DIMENSIONS • MAXIMUM RATING TABLES

### SERIES 1



### SERIES 1 DIMENSIONS (Inches)

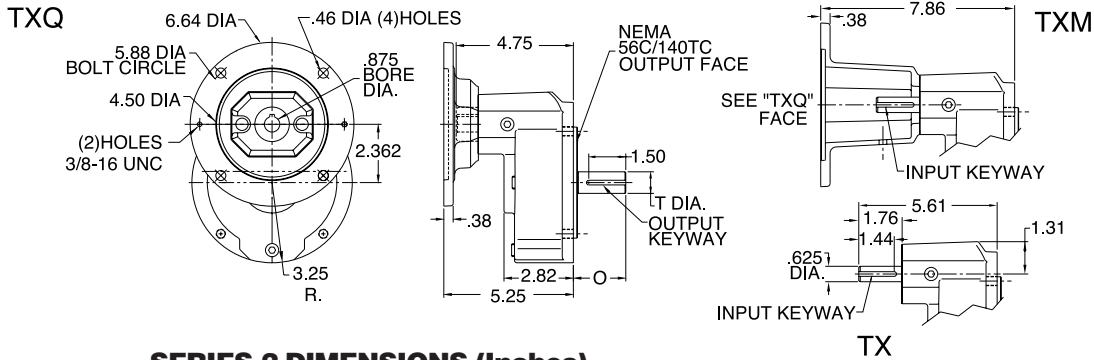
Style	Frame Combinations (Input - Output)	AJ	AK	BD	BF	Input Bore	Input Keyway*	Weight (lbs.)
TXQ	48CZ - 56C	3.75	3.00	4.36	0.28	.500	1/8 X 1/16	19
	56C - 56C	5.88	4.50	6.64	0.41	.625	3/16 X 3/32	19

\* Keyway width by depth

### SERIES 1 • MAXIMUM RATINGS

Exact Ratio	Input R.P.M.	Output R.P.M.	Input H.P.	Output H.P.	Output TQ. (lb-in.)	Overhung Load (lbs.)
2.056	1750	851	2.01	1.97	146	222
2.929	1750	598	1.43	1.41	148	265
4.000	1750	438	1.20	1.18	170	300
5.111	1750	342	1.03	1.01	186	300
7.462	1750	235	0.75	0.73	196	300

**SERIES 2**



**SERIES 2 DIMENSIONS (Inches)**

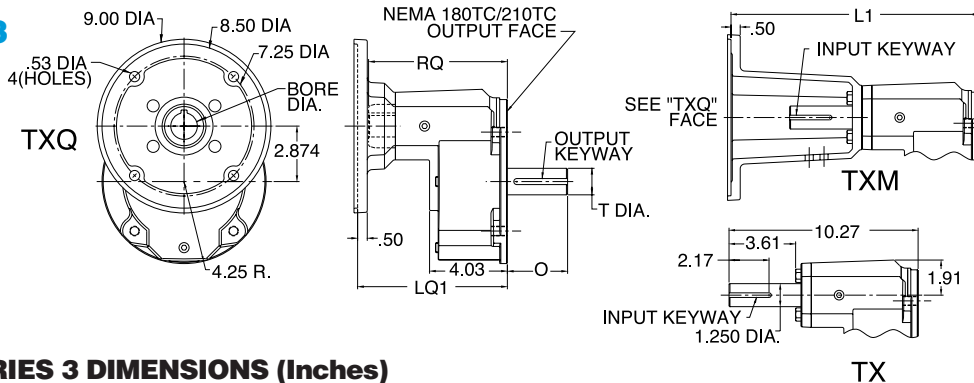
Style	Frame Combinations (Input - Output)	Input Keyway*	O	T +0.000 -0.0015	Output Keyway*	Weight (lbs.)
TXQ, TXM, TX	140TC - 56C	.188 x .094	2.06	0.625	.188 x .094	22
	140TC - 140TC	.188 x .094	2.13	0.875	.188 x .094	22

\* Keyway width by depth

**SERIES 2 • MAXIMUM RATINGS**

Exact Ratio	Input R.P.M.	Output R.P.M.	Input H.P.	Output H.P.	Output TQ. (lb-in.)	Overhung Load 56C Output (lbs.)	Overhung Load 140TC Output (lbs.)
2.000	1750	875	6.00	5.88	424	358	358
2.913	1750	601	4.21	4.13	433	375	434
4.000	1750	438	3.63	3.55	511	375	455
5.000	1750	350	3.00	2.94	529	375	455
7.182	1750	244	2.62	2.57	664	375	455

**SERIES 3**



**SERIES 3 DIMENSIONS (Inches)**

Style	Frame Combinations (Input - Output)	Input Bore	L1	LQ1	O	RQ	T +0.000 -0.0015	Input Keyway*	Output Keyway*	Weight (lbs.)
TXQ, TXM, TX	180TC - 180TC	1.125	13.45	7.76	2.62	7.25	1.125	.250 x .125	.250 x .125 x 1.80	45
	210TC - 180TC	1.375	13.45	7.76	2.62	7.25	1.125	.312 x .156**	.250 x .125 x 1.80	45
	250TC - 180TC	1.625	14.01	8.32	2.62	7.65	1.125	.375 x .188**	.250 x .125 x 1.80	45
	180TC - 210TC	1.125	13.45	7.76	3.12	7.25	1.375	.250 x .125	.312 x .156 x 2.63	45
	210TC - 210TC	1.375	13.45	7.76	3.12	7.25	1.375	.312 x .156**	.312 x .156 x 2.63	45
	250TC - 210TC	1.625	14.01	8.32	3.12	7.65	1.375	.375 x .188**	.312 x .156 x 2.63	45

\* Keyway width by depth

\*\* Input keyway for styles TXM & TX is .250 x .125

**SERIES 3 • MAXIMUM RATINGS**

Exact Ratio	Input R.P.M.	Output R.P.M.	Input H.P.	Output H.P.	Output TQ. (lb-in.)	Overhung Load (lbs.)
2.000	1750	875	20.00	19.60	1412	900
2.964	1750	590	12.98	12.72	1357	900
4.045	1750	433	11.35	11.13	1621	900
5.167	1750	339	10.07	9.87	1836	900
7.538	1750	232	5.80	5.69	1544	900



**RATIO MULTIPLIER**  
AVAILABLE SELECTIONS

**SERIES 1 • SIZE 1**

Style	Ratio	Motor Size	Output "C" Face	Catalogue Number
TXQ	2:1	48C	56C	705568
	2:1	56C	56C	705569
TXQ	3:1	48C	56C	705570
	3:1	56C	56C	705571
TXQ	4:1	48C	56C	705572
	4:1	56C	56C	705573
TXQ	5:1	48C	56C	705574
	5:1	56C	56C	705575
TX	2:1	-	56C	705576
	3:1	-	56C	705577
TX	4:1	-	56C	705578
	5:1	-	56C	705579

**SERIES 2 • SIZE 2**

Style	Ratio	Motor Size	Output "C" Face	Catalogue Number
TXQ	2:1	56C	56C	705189
	2:1	56C	140C	705197
TXQ	2:1	140TC	56C	705193
	2:1	140TC	140TC	705201
TXQ	3:1	56C	56C	705190
	3:1	56C	140TC	705198
TXQ	3:1	140TC	56C	705194
	3:1	140TC	140TC	705202
TXQ	4:1	56C	56C	705191
	4:1	56C	140TC	705199
TXQ	4:1	140TC	56C	705195
	4:1	140TC	140TC	705203
TXQ	5:1	56C	56C	705192
	5:1	56C	140TC	705200
TXQ	5:1	140TC	56C	705196
	5:1	140TC	140TC	705204
TX	2:1	-	56C	705173
	2:1	-	140TC	705177
TX	3:1	-	56C	705174
	3:1	-	140TC	705178
TX	4:1	-	56C	705175
	4:1	-	140TC	705179
TX	5:1	-	56C	705176
	5:1	-	140TC	705180

**SERIES 3 • SIZE 3\***

Style	Ratio	Motor Size	Output "C" Face	Catalogue Number
TXQ	2:1	180TC	180TC	705565
	2:1	180TC	210TC	705580
TXQ	2:1	210TC	180TC	705581
	2:1	210TC	210TC	705582
TXQ	3:1	180TC	180TC	705564
	3:1	180TC	210TC	705583
TXQ	3:1	210TC	180TC	705584
	3:1	210TC	210TC	705563
TXQ	4:1	180TC	180TC	705562
	4:1	180TC	210TC	705585
TXQ	4:1	210TC	180TC	705586
	4:1	210TC	210TC	705587
TXQ	5:1	180TC	180TC	705566
	5:1	180TC	210TC	705588
TXQ	5:1	210TC	180TC	705561
	5:1	210TC	210TC	705589
TX	2:1	-	180TC	705590
	2:1	-	210TC	705591
TX	3:1	-	180TC	705592
	3:1	-	210TC	705593
TX	4:1	-	180TC	705594
	4:1	-	210TC	705595
TX	5:1	-	180TC	705596
	5:1	-	210TC	705597

\*Larger Sizes Available -Contact Factory