

**Non-Motorized, Double Reduction (F1 Flange Mount Shown)**

Series	AD	AH	AJ	AK■	BA	BB	BF	C	D	DB	FM		FU +0.000/ -0.001	FV	FZ
											TAP	DEPTH			
717	5.47	1.41	3.94	3.15	4.72	0.12	0.28	9.88	1.81	0.27	1/4-20	0.62	0.625	1.57	0.70
727	5.47	1.79	3.94	3.15	4.72	0.12	0.28	10.26	1.81	0.27	1/4-20	0.62	0.625	1.57	0.70
747	7.01	2.24	5.12	4.33	6.30	0.14	0.43	13.00	2.76	0.21	5/16-18	0.75	0.750▲	1.97	0.83
757	7.95	2.60	5.12	4.33	6.30	0.14	0.43	13.67	2.76	0.61	5/16-18	0.75	0.750▲	1.97	0.83

Series	GA	LQ 56C140TC		LQ1 180TC	M		OA	U +0.000/ -0.001	UY	V	INPUT KEY	OUTPUT KEY
		2-Stage	3-Stage		TAP	DEPTH						
717	0.39	7.42	8.19	N/A	1/4-20	0.62	5.02	0.750	0.83	1.57	3/16 x 1.12	3/16 x 1.12
727	0.39	7.44	8.21	N/A	1/4-20	0.62	5.02	1.000	1.11	1.97	3/16 x 1.12	1/4 x 1.62
747	0.61	9.25	9.59	9.78	5/16-18	0.75	6.75	1.250	1.36	2.36	3/16 x 1.50	1/4 x 2.00
757	0.61	10.00	10.35	10.53	5/16-18	0.75	6.81	1.250*	1.36	2.36	3/16 x 1.50	1/4 x 2.00

**Non-Motorized, Triple Reduction (F1 Flange Mount Shown)**

Series	AD	AH	AJ	AK■	BA	BB	BF	C	D	DB	FM		FU +0.000/ -0.001	FV	FZ
											TAP	DEPTH			
717	5.47	1.41	3.94	3.15	4.72	0.12	0.28	10.06	1.81	0.13	1/4-20	0.62	0.625	1.57	0.70
727	5.47	1.79	3.94	3.15	4.72	0.12	0.28	10.44	1.81	0.13	1/4-20	0.62	0.625	1.57	0.70
747	7.01	2.24	5.12	4.33	6.30	0.14	0.43	12.92	2.76	0.59	5/16-18	0.75	0.750▲	1.57	0.83
757	7.95	2.60	5.12	4.33	6.30	0.14	0.43	13.60	2.76	0.61	5/16-18	0.75	0.750▲	1.57	0.83

Series	GA	LQ 56C140TC		LQ1 180TC	M		OA	U +0.000/ -0.001	UY	V	INPUT KEY	OUTPUT KEY
		2-Stage	3-Stage		TAP	DEPTH						
717	0.39	7.42	8.19	N/A	1/4-20	0.62	5.02	0.750	0.83	1.57	3/16 x 1.12	3/16 x 1.12
727	0.39	7.44	8.21	N/A	5/16-18	0.75	5.02	1.000	1.11	1.97	3/16 x 1.12	1/4 x 1.62
747	0.61	9.25	9.59	9.78	5/16-18	0.75	6.75	1.250	1.36	2.36	3/16 x 1.50	1/4 x 2.00
757	0.61	10.00	10.35	10.53	5/16-18	0.75	6.81	1.250*	1.36	2.36	3/16 x 1.50	1/4 x 2.00

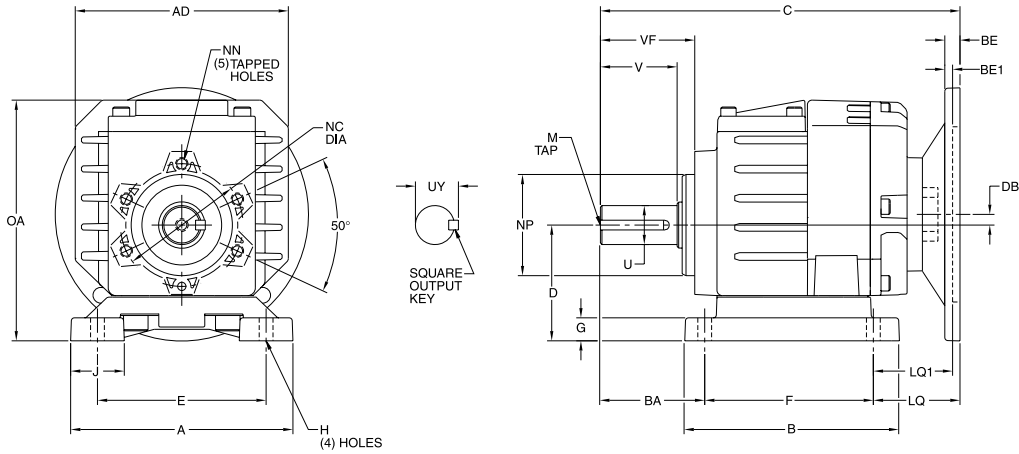
\* 1.375" diameter shaft is available. Contact LEESON for availability.

▲ 0.875" diameter shaft is available. Contact LEESON for availability.

■ Tolerance of AK on flanges with BA dimension under 6.30" is -0.0014 to -0.0028". Flanges with a BA of 6.30" or larger have a AK tolerance of -0.0017 to -0.0033".

F1 Flange Mount is shown. See page 137 for available output flanges

For NEMA motor mounting dimensions see page 144



**Motorized Quill Input, Double Reduction (B1 Base Mount Shown)**

Series	A	AD	B	BA	C		D	DB	E	F	G	H	J	LQ		M	
					56/140	180								56/140	180	TAP	DEPTH
717	5.71	5.47	5.51	2.28	8.83	NA	2.95	0.27	4.33	4.33	0.59	0.35	1.38	2.23	NA	1/4-20	0.62
727	5.71	5.47	6.02	2.95	9.23	NA	3.54	0.27	4.33	5.12	0.79	0.35	1.38	1.16	NA	5/16-18	0.75
747	6.69	7.01	7.76	3.54	11.49	12.02	4.53	0.21	5.31	6.50	0.94	0.55	1.65	1.45	1.98	5/16-18	0.75
757	6.69	7.95	7.76	3.54	12.20	12.73	4.53	0.61	5.31	6.50	0.94	0.55	1.65	2.16	2.69	5/16-18	0.75

Series	NC	NP	NN		OA	U +0.000/ -0.001	UY	V	VF	OUTPUT KEY
			TAP	DEPTH						
717	3.15	2.60	M8	0.67	6.12	0.750	0.83	1.57	2.02	3/16 x 1.12
727	3.15	2.60	M8	0.67	6.71	1.000	1.11	1.97	2.40	1/4 x 1.62
747	4.84	4.17	M10	0.71	8.52	1.250	1.36	2.36	2.97	1/4 x 2.00
757	4.84	4.17	M10	0.71	8.58	1.250*	1.36	2.36	2.97	1/4 x 2.00

**Motorized Quill Input, Triple Reduction (B1 Base Mount Shown)**

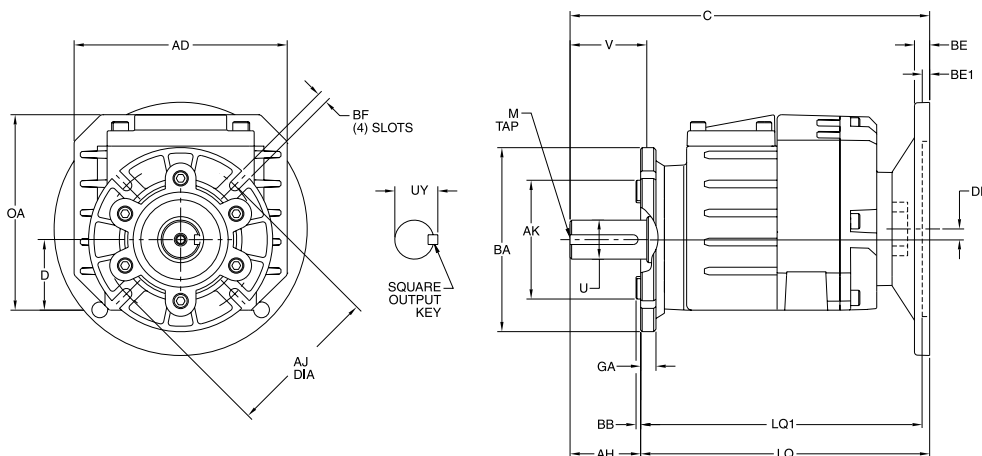
Series	A	AD	B	BA	C	D	DB	E	F	G	H	J	LQ	M	
														TAP	DEPTH
717	5.71	5.47	5.51	2.28	9.60	2.95	0.13	4.33	4.33	0.59	0.35	1.38	2.99	1/4-20	0.62
727	5.71	5.47	6.02	2.95	10.00	3.54	0.13	4.33	5.12	0.79	0.35	1.38	2.99	5/16-18	0.75
747	6.69	7.01	7.76	3.54	11.83	4.53	0.59	5.31	6.50	0.94	0.55	1.65	1.83	5/16-18	0.75
757	6.69	7.95	7.76	3.54	12.55	4.53	0.61	5.31	6.50	0.94	0.55	1.65	2.51	5/16-18	0.75

Series	NC	NP	NN		OA	U +0.000/ -0.001	UY	V	VF	OUTPUT KEY
			TAP	DEPTH						
717	3.15	2.60	M8	0.67	6.12	0.750	0.83	1.57	2.02	3/16 x 1.12
727	3.15	2.60	M8	0.67	6.71	1.000	1.11	1.97	2.40	1/4 x 1.62
747	4.84	4.17	M10	0.71	8.52	1.250	1.36	2.36	2.97	1/4 x 2.00
757	4.84	4.17	M10	0.71	8.58	1.250*	1.36	2.36	2.97	1/4 x 2.00

\*1.375" diameter shaft is available. Contact LEESON for availability.

B1 Base Mount is shown. See pages 138 & 139 for available interchange bases

For NEMA motor mounting dimensions see page 144



**Motorized Quill Input, Double Reduction (F1 Flange Mount Shown)**

Series	AD	AH	AJ	AK ■	BA	BB	BF	C		D	DB	GA
								56/140	180			
717	5.47	1.41	3.94	3.15	4.72	0.12	0.28	8.83	N/A	1.81	0.27	0.39
727	5.47	1.79	3.94	3.15	4.72	0.12	0.28	9.23	N/A	1.81	0.27	0.39
747	7.01	2.24	5.12	4.33	6.30	0.14	0.43	11.49	12.02	2.76	0.21	0.61
757	7.95	2.60	5.12	4.33	6.30	0.14	0.43	12.20	12.73	2.76	0.61	0.61

Series	LQ 56C/140TC		LQ1	M		OA	U +0.000/ -0.001	UY	V	OUTPUT KEY
	2-Stage	3-Stage		TAP	DEPTH					
717	7.42	8.19	N/A	1/4-20	0.62	5.02	0.750	0.83	1.57	3/16 x 1.12
727	7.44	8.21	N/A	5/16-18	0.75	5.02	1.000	1.11	1.97	1/4 x 1.62
747	9.25	9.59	9.78	5/16-18	0.75	6.75	1.250	1.36	2.36	1/4 x 2.00
757	10.00	10.35	10.53	5/16-18	0.75	6.81	1.250*	1.36	2.36	1/4 x 2.00

**Motorized Quill Input, Triple Reduction (F1 Flange Mount Shown)**

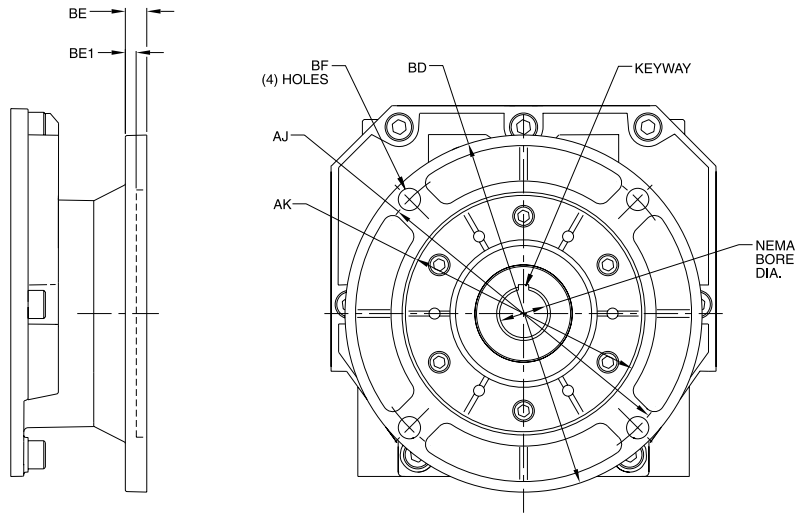
Series	AD	AH	AJ	AK ■	BA	BB	BF	C	D	DB	GA
717	5.47	1.41	3.94	3.15	4.72	0.12	0.28	9.60	1.81	0.13	0.39
727	5.47	1.79	3.94	3.15	4.72	0.12	0.28	10.00	1.81	0.13	0.39
747	7.01	2.24	5.12	4.33	6.30	0.14	0.43	11.83	2.76	0.59	0.61
757	7.95	2.60	5.12	4.33	6.30	0.14	0.43	12.55	2.76	0.61	0.61

Series	LQ 56C/140TC		LQ1	M		OA	U +0.000/ -0.001	UY	V	OUTPUT KEY
	2-Stage	3-Stage		TAP	DEPTH					
717	7.42	8.19	N/A	1/4-20	0.62	5.02	0.750	0.83	1.57	3/16 x 1.12
727	7.44	8.21	N/A	5/16-18	0.75	5.02	1.000	1.11	1.97	1/4 x 1.62
747	9.25	9.59	9.78	5/16-18	0.75	6.75	1.250	1.36	2.36	1/4 x 2.00
757	10.00	10.35	10.53	5/16-18	0.75	6.81	1.250*	1.36	2.36	1/4 x 2.00

\*1.375" diameter shaft is available. Contact LEESON for availability.  
 ■ Tolerance of AK on flanges with BA dimension under 6.30" is -0.0014 to -0.0028"  
 Flanges with a BA of 6.30" or larger have a AK tolerance of -0.0017 to -0.0033"

F1 Flange Mount is shown. See page 137 for available output flanges

For NEMA motor mounting dimensions see page 144



**NEMA Motor Mounting Dimensions (Inches)**

Frame	AJ	AK	BD	BE	BE1	BORE Dia. +0.0015/ +0.0005	Keyway*	BF
56C	5.88	4.50	6.50	0.38	N/A	0.625	3/16 x 3/32	0.41
140TC	5.88	4.50	6.50	0.38	N/A	0.875	3/16 x 3/33	0.41
180TC	7.25	8.50	9.00	N/A	0.50	1.125	1/4 x 1/8	0.53

\* Keyway width by depth

**Motor Mounting Position**

Conduit box position viewed from input side of reducer.

