

# Cast Iron Gear Reducers Built For Industrial Use



**Precision mounting surfaces** and extra threaded bolt holes on top and bottom for flexibility and to accept a wide range of stock mounting accessories.

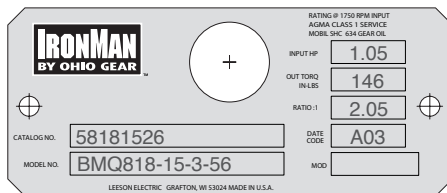
**Cast iron NEMA C input flange** with machined fits for precision alignment of motor and bearings.

**Push-off holes** drilled and tapped into flange for quick motor removal on quill input styles ( 56 & 140TC frames ).

**O-rings on input and output covers** eliminate gaskets, sealants and leaks.

**Mounting dimensions are interchangeable** with Baldor 900 series, Boston Gear, Browning Raider, Falk, Grove, Morse Invader and other "industry standard" reducers.

**Permanent "full fact" metal nameplate** is drive screwed to housing for easy field identification even after years of service.



**IronMan™ fine-grained, one-piece cast housing** for rigidity and alignment. Machined for precision alignment of worm, worm gear, bearings and mounting surfaces. Superior resistance to environmental contaminants with high heat dissipation and noise reduction. BISSC certified reducers available for food service applications.

**Bronze alloy worm gear** is chill cast from premium quality bronze for maximum strength, lubricity and superior life.

**Seal Guard\*\*** on quill-input styles protects input seal from damage during motor installation.

\*\* Sizes 813 through 852 only



**Oversized positively-retained high speed input shaft bearing** for higher shock load capacity, shaft alignment and seal life. Ideal for frequent starting and reversing applications.

**Single-piece, alloy steel input worm shaft.** High lead angle worm is case-hardened, ground and polished for enhanced efficiency and noise reduction.

**Tapered roller bearings** on output shaft for high overhung and thrust load capacities.

**High capacity oil reservoir** reduces noise, aids heat dissipation and lubricates for life. Multiple venting options for multi-position mounting. Factory filled with premium Mobil SHC634 synthetic lubricant.

**Robust output shaft** of high strength steel alloy for superior torque and overhung load capacities.

**Viton® premium quality, double lip seals\*\*** throughout —on micro-finished surfaces— mean extended life, resistance to high temperature, abrasion and chemicals.

**Single output cover** design provides precise centering of gear for lower noise levels and higher overall gear efficiencies.

**Premium Grade 5** heat-treated bolts used throughout.

## START WITH A BASIC SINGLE OR DOUBLE REDUCTION UNIT...

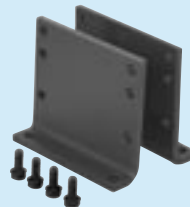


Style BMQ

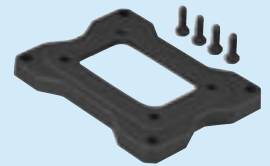


Style DHMQ

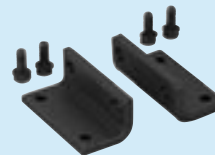
## AND ADD COMPONENTS...



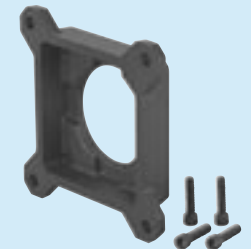
Vertical Mount Kit



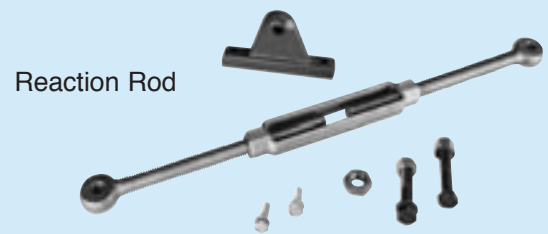
Horizontal Base Kit



J Mount Kit



Output Flange Mount Kit



Reaction Rod

## TO CREATE THOUSANDS OF REDUCER AND GEAR+MOTOR™ COMBINATIONS

