

# The New Standard in Gear Reducers



**IRONMAN**  
BY OHIO GEAR™

## NEW IN THIS CATALOGUE

- **HELICAL/WORM  
DOUBLE REDUCTION  
REDUCERS PG.72**
- **BRAVO™ ALUMINUM  
RIGHT-ANGLE  
REDUCERS PG.98**
- **HYDRO-MEC METRIC  
RIGHT-ANGLE  
REDUCERS PG.111**
- **LeCENTRIC™ INLINE  
REDUCERS PG.122**

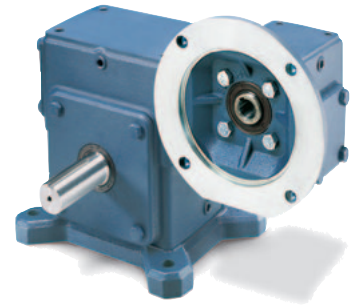
LEESON CANADA, as part of REGAL-BELOIT CORPORATION, one of North America's leading manufacturers of electro-mechanical equipment, brings you the industry's newest and most advanced line of fractional and integral horsepower worm gear products.

IRONMAN BY OHIO GEAR™ is the pacesetter in premium-featured worm gear reducers. This line of cast-iron-housed fractional and integral worm gear speed reducers is a true heavy-duty workhorse that handles the environmental assaults, shock loading, frequent reversing, and continuous duty cycles typical in industrial applications.

Single reduction and double reduction units are available in a wide range of styles with solid or hollow output shafts. Special WASHGUARD® models offer enhanced performance in food processing applications.

LEESON IRONMAN BY OHIO GEAR™ reducers include, as standard, top-quality features for which you'll often pay extra with other reducer brands. Consider these features:

- One-piece cast iron housings, CNC machined for precise component fit and alignment.
- Viton® double-lip seals and super micro-finished seal surfaces.
- Extra-large lubricant reservoir filled with high-temperature synthetic lubricant.
- One-piece, precision-finished worms with high lead angle for efficiency and long-life coupled with bronze alloy, chill-cast worm gears.
- Oversize high-speed bearings, positively retained, for frequent reversing and start/stop cycles.
- Conservatively rated output bearings for maximum thrust and overhung load capacity.
- Ultimate application flexibility with all-angle mounting provisions, an array of accessory bases and flanges, and motorized or solid-shaft input choices.
- Direct interchangeability with other brands of cast iron reducers, including Boston, Browning, Grove and Morse.
- Match with LEESON motors — single-phase, three-phase or DC.



To learn more, see pages 4 and 5 for a complete feature description of the industry's newest and most advanced line of fractional and integral horsepower worm gear products.





## TABLE OF CONTENTS

<b>SINGLE REDUCTION GEAR REDUCERS</b> .....	Page 4
Model Number System .....	10
Quick Selection tables .....	12
Rating Tables .....	14
Dimensions .....	18
Weights .....	90
<b>DOUBLE REDUCTION WORM/WORM GEAR REDUCERS</b> .....	40
Model Number System .....	44
Quick Selection tables .....	46
Rating Tables .....	48
Dimensions .....	52
Ratio Combinations .....	71
Weights .....	90
<b>DOUBLE REDUCTION HELICAL/WORM GEAR REDUCERS</b> .....	72
Model Number System .....	73
Rating Tables .....	75
Quick Selection tables .....	78
Ratio Combinations .....	79
Dimensions .....	80
<b>RATIO MULTIPLIERS</b> .....	84
Available Selections .....	86
<b>ADDITIONAL CAPABILITIES</b> .....	87
<b>ACCESSORIES</b> .....	88
<b>RIGHT-ANGLE TECHNICAL INFORMATION</b> .....	92
<b>WASHGUARD® AVAILABILITY</b> .....	96
<b>ALUMINUM RIGHT-ANGLE</b> .....	98
Model Number System .....	102
Rating Tables .....	103
Dimensions .....	104
<b>METRIC ALUMINUM RIGHT-ANGLE</b> .....	111
Model Number System .....	112
Selection Tables .....	113
Dimensions .....	114
Metric Motor Dimensions .....	121
<b>LeCENTRIC™ INLINE GEAR REDUCERS</b> .....	122
Model Number System .....	126
“How-To-Use” Tables .....	127
Maximum Rating tables .....	128
Bases and Output Flanges .....	136
Competitive Base Interchange Selections .....	138
Dimensions .....	140
Technical Information .....	144
Weights .....	148
<b>CAST IRON INLINE GEAR REDUCERS</b> .....	149
Model Number System .....	150
Selection Table .....	151
Maximum Rating Tables .....	152
Dimensions .....	154
Technical Information .....	158
<b>PARTS LIST</b> .....	160
<b>CONDENSED GLOSSARY OF TERMS</b> .....	172
<b>APPROVALS</b> .....	173
<b>MOTOR DIMENSIONS</b> .....	174
<b>WARNINGS AND CAUTIONS</b> .....	175-176
<b>TERMS AND CONDITIONS</b> .....	177-179